

ROLAND® Outdoor Bars

ROLAND® GmbH
Steinbeeke 17
D-27243 Harpstedt

T: +49 4244 95380

www.roland-germany.de
info@roland-germany.de



ROLAND®

ROLAND®

ROLAND Outdoor Bars – 15 years of Experience

- six different equipment options
- refrigerator bodies in all technically feasible dimensions
- inside and outside 4A ground and polished
- refrigerating unit can be fully integrated
- up to four refrigerating units in one body
- high-performance evaporator with two ventilators and air deflectors
- glass touch panel thermostat with rapid cooling mode
- inboard drawers are height-adjustable and have Corian handles
- easily accessible and easy to clean vaporization bowls
- tool-free easy cleaning and maintenance
- high pressure foamed CFC-free refrigerating unit



ROLAND Refrigeration Units

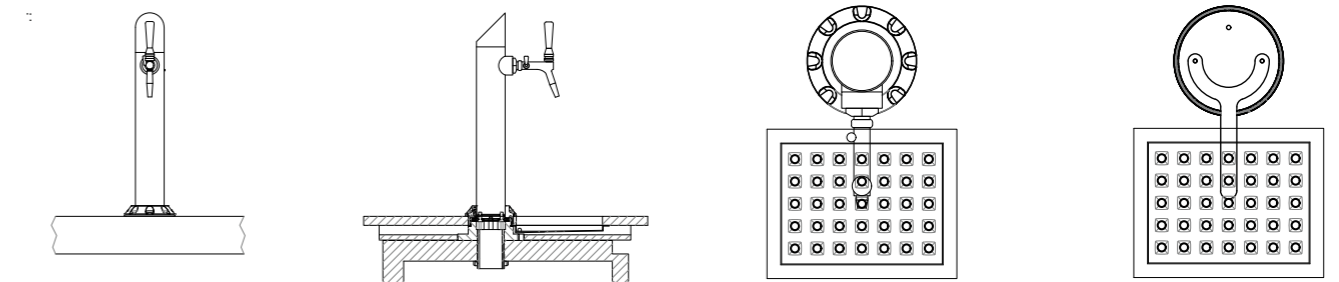
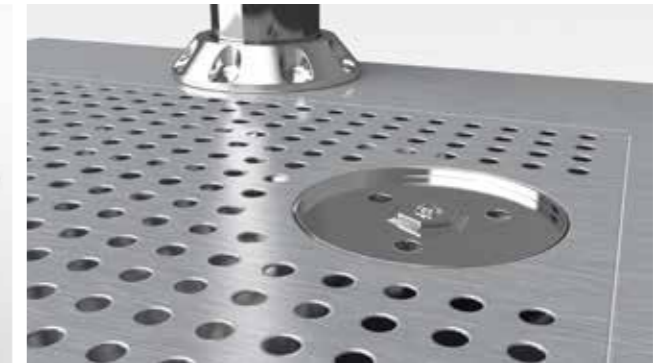


- two compact models with chilled water connection
- V4A bodies with condensed water tray
- mechanical unit is silenced by vibration absorber
- the complete switch and control unit is easily accessible
- optionally in varnished in white
- optionally with compressor heating

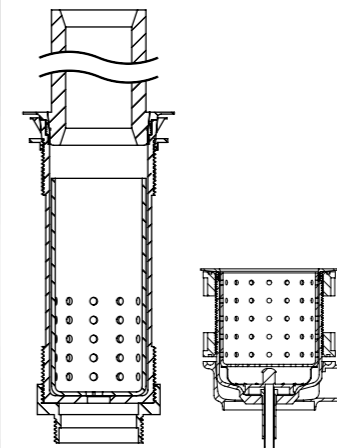
ROLAND Taps and Drip Grids



- single or multiple pipeline dispensers
- V4A ground and polished
- compensating dispenser V2A polished
- beer tapping unit is delivered fully operational
- drip grids in all technically feasible measurements
- V4A ground and polished
- drip tray with or without glass cleaning fountain
- pre-assembled and ready for installation
- tap adapter with lid for tool-free assembly and dismantling



ROLAND Undermount Sinks with Special Drains



- undermount sinks in all technically feasible measurements
- V4A ground / polished
- material thickness 1,5 mm
- models with tilt radius and tilt factor R20
- outside surfaces sound insulated
- standpipe valves 1 ½ " with waste collection sieves
- basket valve 3 ½ " with waste collection sieves