

ROLAND® Product Line

ROLAND® GmbH
Steinbeeke 17
D-27243 Harpstedt

T: +49 4244 95380

www.roland-germany.com

ROLAND®



ROLAND®

IN OVER 30 YEARS, ROLAND HAS COMPLETELY FITTED OUT MORE THAN 50 MEGA YACHTS AND SERVICES THEM ALL OVER THE WORLD.

We have gained large experience from more than two hundred gastronomy and fifty mega yacht projects which made us one of the most experienced of our industry today and which paves the way for setting of new standards.



FROM THE VERY BEGINNING, ROLAND HAS INTEGRATED ONLY THE HIGHEST QUALITY STANDARDS INTO THE OVERALL CONCEPT OF FURNITURE DESIGN. THE ADVANTAGES OF ROLAND FURNITURE SERIES ARE:

- modular design
- interchangeable outfits
- hygiene standards higher than H1
- excellent workmanship
- precision
- specific material qualities
- special room features
- complete stainless steel

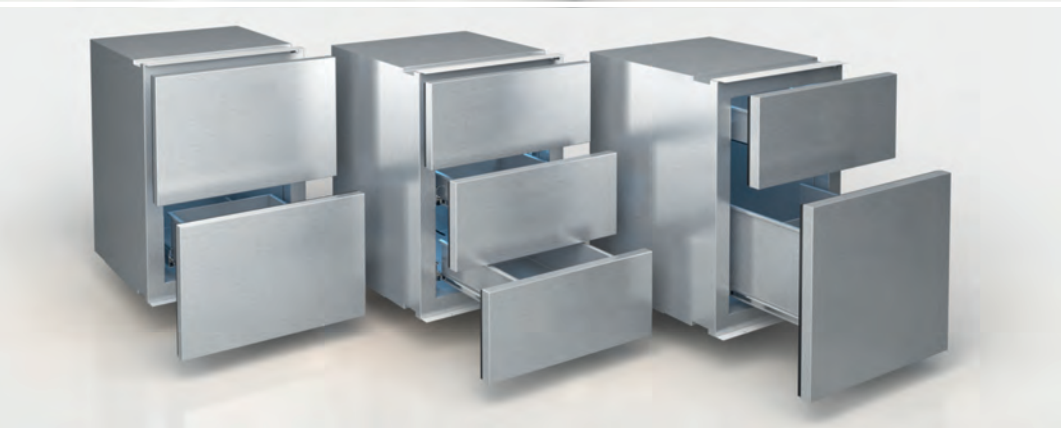
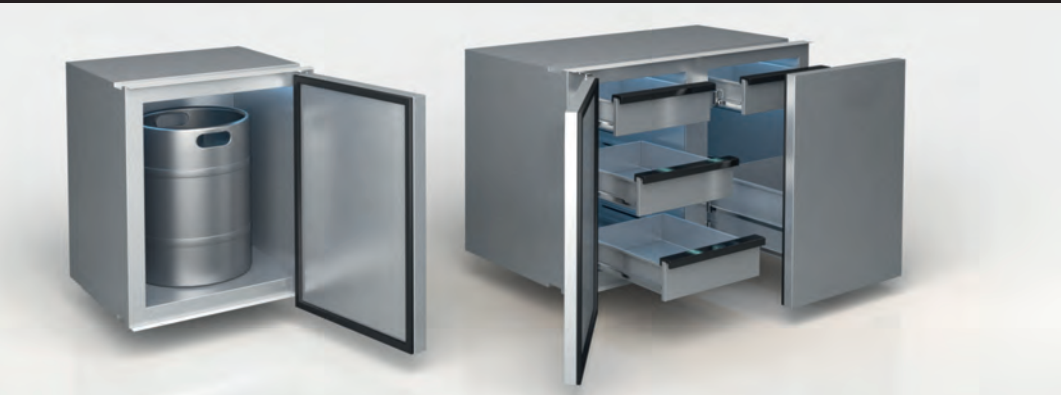


“NEW HORIZONS, NEW EXPECTATIONS, NEW STANDARDS...”

Our philosophy is based on our ideas, but what does it mean?

It's a well-known fact that we understand our craft, and success proves us right. But what comes next? What is it that distinguishes us from others and takes us ahead?

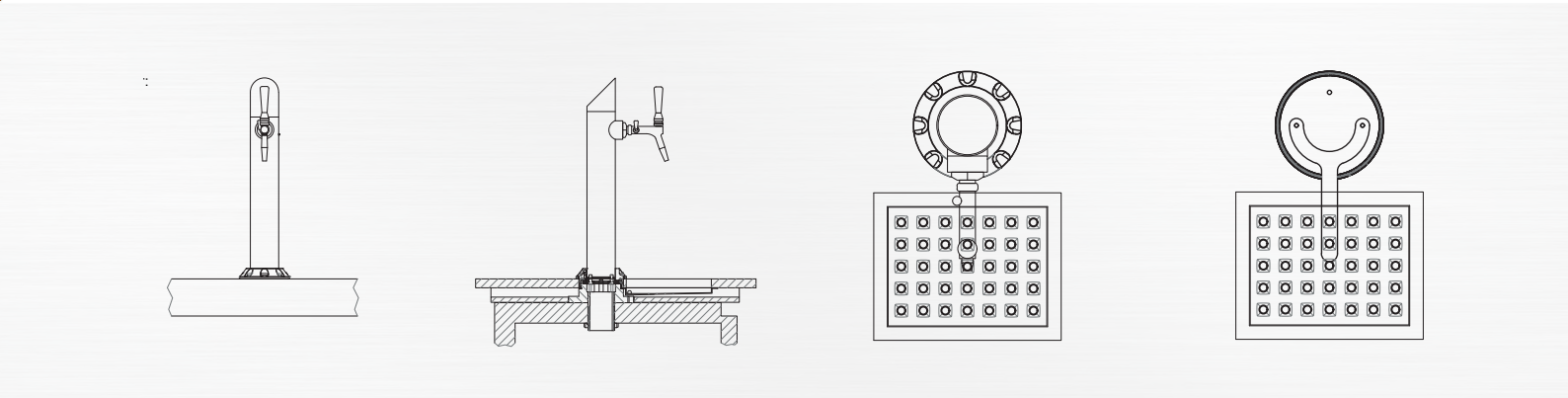
We at ROLAND are thinking ahead! We rise to new challenges by setting new standards, increasing our customers' expectations and, of course, the high expectations we set for ourselves. We attach great importance on organisation and well-planned and thought out projects.



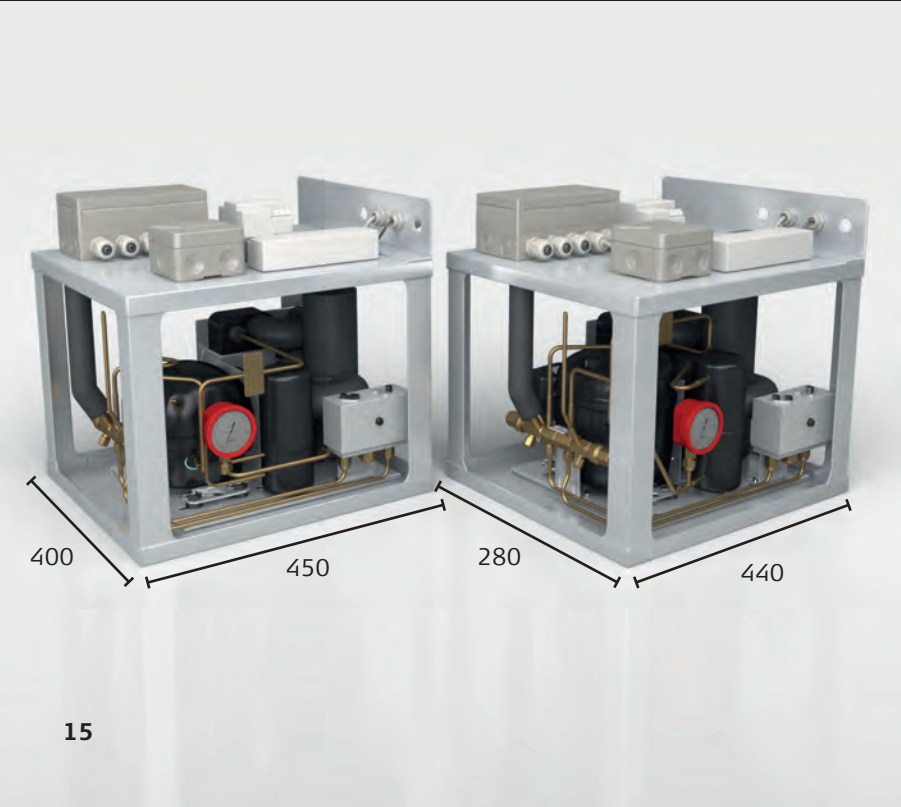
- six different equipment options
- refrigerator bodies in all technically feasible dimensions
- inside and outside seawater proofed stainless steel ground and polished
- refrigerating unit can be fully integrated
- up to four refrigerating units in one body
- high-performance evaporator with two ventilators and air deflectors
- glass touch panel thermostat with rapid cooling mode
- inboard drawers are height-adjustable and have Corian handles
- easily accessible and easy to clean vaporisation bowls
- tool-free easy cleaning and maintenance
- high pressure foamed CFC-free refrigerating unit
- isolation 55 mm



- single or multiple pipeline dispensers
- waterproofed stainless steel ground and polished
- compensating dispenser stainless steel polished
- beer tapping unit is delivered fully operational
- drip grids in all technically feasible measurements
- V4A ground and polished
- drip tray with or without glass cleaning fountain
- pre-assembled and ready for installation
- tap adapter with lid for tool-free assembly and dismantling



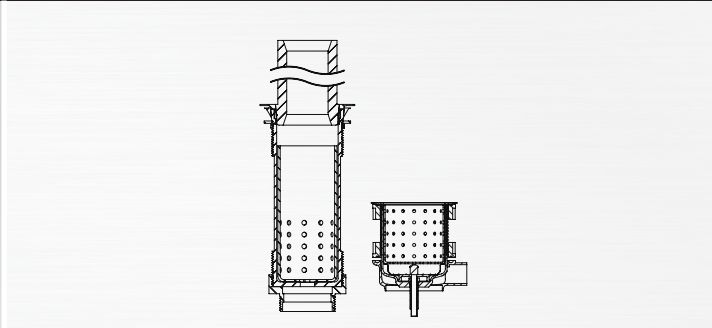
ROLAND PROFI Refrigeration Units



REFRIGERATION UNIT FEATURES:

- refrigerant manometer
- push switch with reset button
- test valves for high and low pressure
- high-performance compressors
- optionally extractable up to 50 cm
- two compact models with chilled water connection
- V4A bodies with condensed water tray
- mechanical unit is silenced by vibration absorber
- the complete switch and control unit is easily accessible
- optionally in varnished in white
- optionally with compressor heating
- optionally retractable up to 50 cm

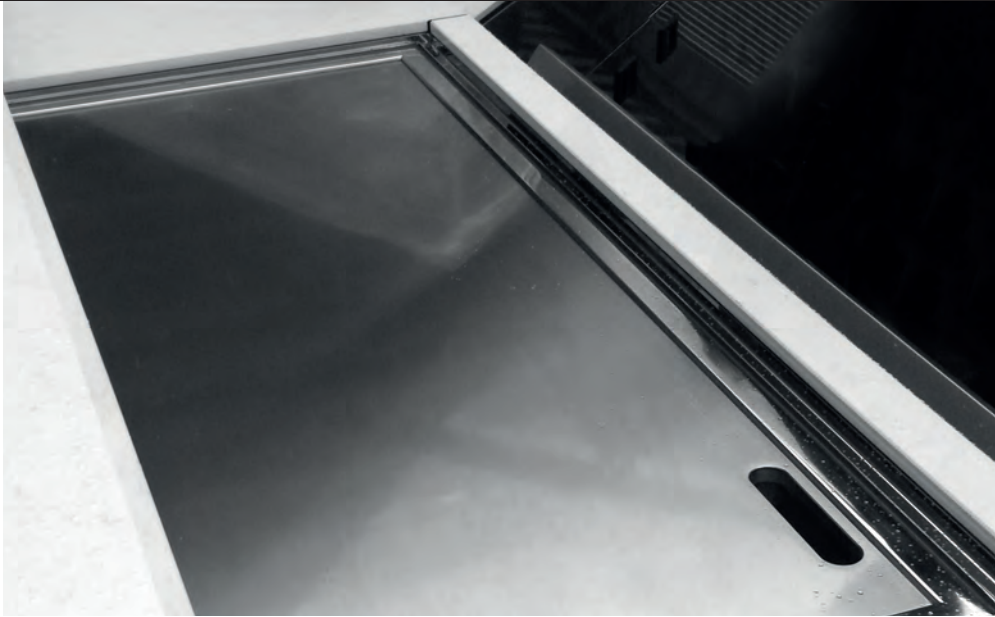
ROLAND Undermount Sinks with Special Drains



- undermount sinks in all technically feasible measurements
- seawater proofed stainless steel ground / polished
- material thickness 1.5 mm
- models with tilt radius and tilt factor R20
- outsides surfaces sound insulated
- standpipe valves 1 ½ " with waste collection sieves
- basket valve 3 ½ " with waste collection sieves



- fully integrable into furniture fronts
- ice maker with 30 kg/day capacity
- unit with waste-water pump, water filter, and electrical protection
- unit has telescopic rails extractable for maintenance and repair
- integrable in pantries
- available as seawaterproofed stainless steel for outdoor use
- pre-assembled and ready for installation



TEPPAN YAKI

- integrable unit with hot zones in the middle and on the edges
- made in waterproofed stainless steel
- griddle is hard chrome plated
- digitally controlled
- emergency-off on demand and potential-free switching contact
- available in standard widths 100/120/140 and 160 cm
- special sizes available on consultation



- high pressure foamed CFC-free crushed ice container
- polished seawater proofed stainless steel
- easy-open lid with gas-filled shock absorber
- smart glass, turns opaque under voltage
- LED side lighting
- pre-assembled and ready for installation



GRIDDLE PLATE

- integrable unit with two evenly sized heat zones (left/right)
- otherwise as Teppan Yaki Grill
- standard widths 40 to 120 cm (in 10 cm steps), and 120/140 and 160 cm

ROASTING GRILL /STEAK GRILL

- built-in unit with heaters that can be tilted upwards and drip tray
- technical specifications as described
- standard measurements 40 to 120 cm (in 10 cm steps)